

高硬度・高屈折率の真球状樹脂微粒子

# ハードビーズ®

メラミン樹脂微粒子

## 特徴

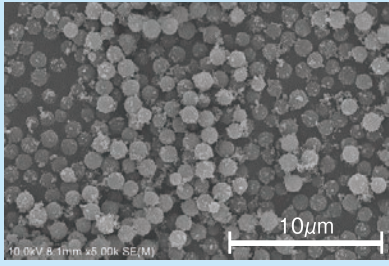
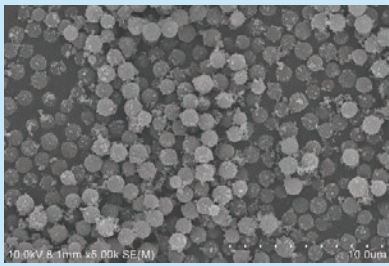
■ 高硬度、高屈折率

※粒子硬度=10%変位時に於ける圧縮強度

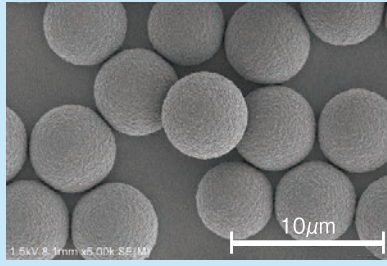
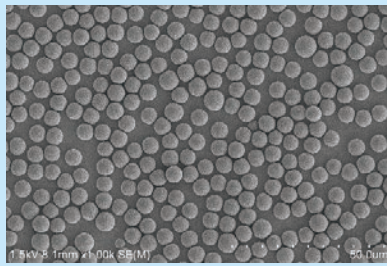
	屈折率	粒子硬度[MPa]
ハードビーズ®	1.68	76
アクリル粒子	1.49	45
ポリスチレン粒子	1.59	37

## グレード

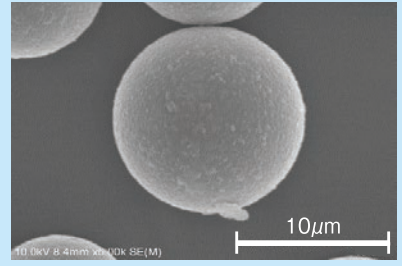
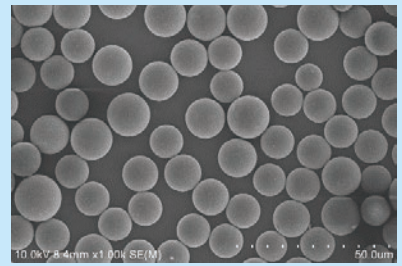
M1 (平均粒子径1 $\mu$ m)



M5 (平均粒子径5 $\mu$ m)

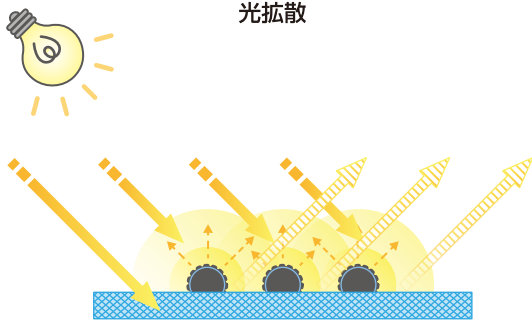


M10 (平均粒子径10 $\mu$ m)

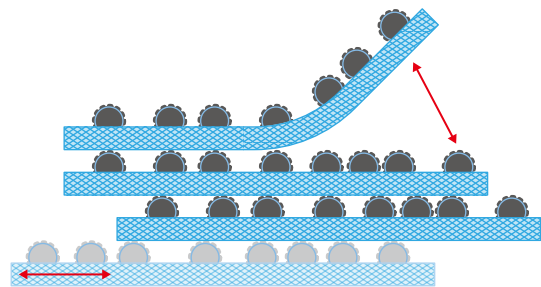


## 用途例

光拡散



アンチブロック



日産化学株式会社

〒103-6119 東京都中央区日本橋2-5-1  
日本橋高島屋三井ビルディング

化学品事業部 ファインケミカル営業部

TEL : 03-4463-8151 FAX : 03-4463-8158  
URL : <http://www.nissanchem.co.jp>  
E-mail : [enq\\_org@nissanchem.co.jp](mailto:enq_org@nissanchem.co.jp)

このカタログに記載されている数値は測定値であり規格値ではありません。  
ご検討、ご使用される場合は関連特許にご配慮下さいますようお願い申し上げます。

# HARDBEADS™

HARDBEADS™ are spherical fine particles of melamine resin.

## FEATURES

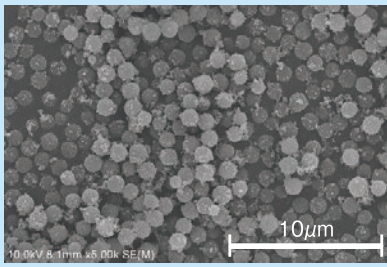
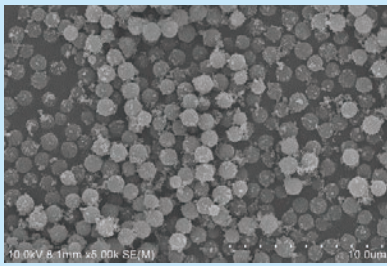
### High hardness, High refractive index

※Particle hardness: compressive strength at 10% deformation.

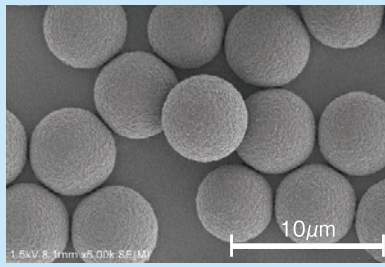
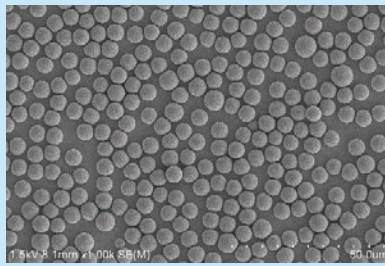
	Refractive index	Particle hardness[MPa]
HARDBEADS™	1.68	76
acrylic particles	1.49	45
polystyrene particles	1.59	37

## GRADES

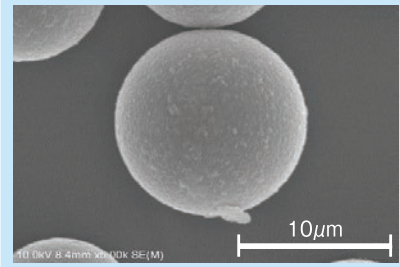
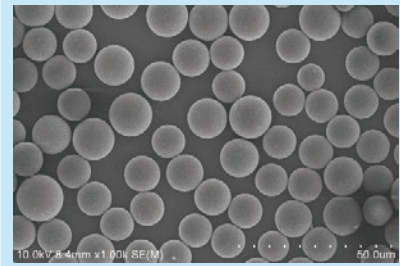
M1 (Ave. particle size 1 $\mu$ m)



M5 (Ave. particle size 5 $\mu$ m)

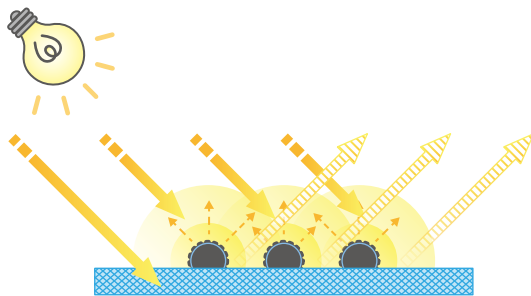


M10 (Ave. particle size 10 $\mu$ m)

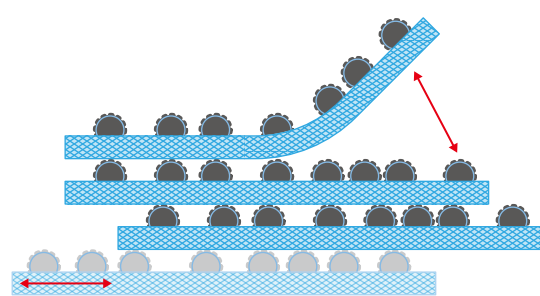


## APPLICATIONS

Light diffusion



Anti blocking



**Nissan Chemical**  
CORPORATION

5-1, Nihonbashi 2-chome, Chuo-ku, Tokyo  
103-6119, Japan

Chemicals Division, Fine Chemicals Dept.

TEL : +81-3-4463-8151

URL : <http://www.nissanchem.co.jp>

The above values are typical properties and are not intended to indicate specification values. Customers are required to investigate potential infringement of relevant patents.